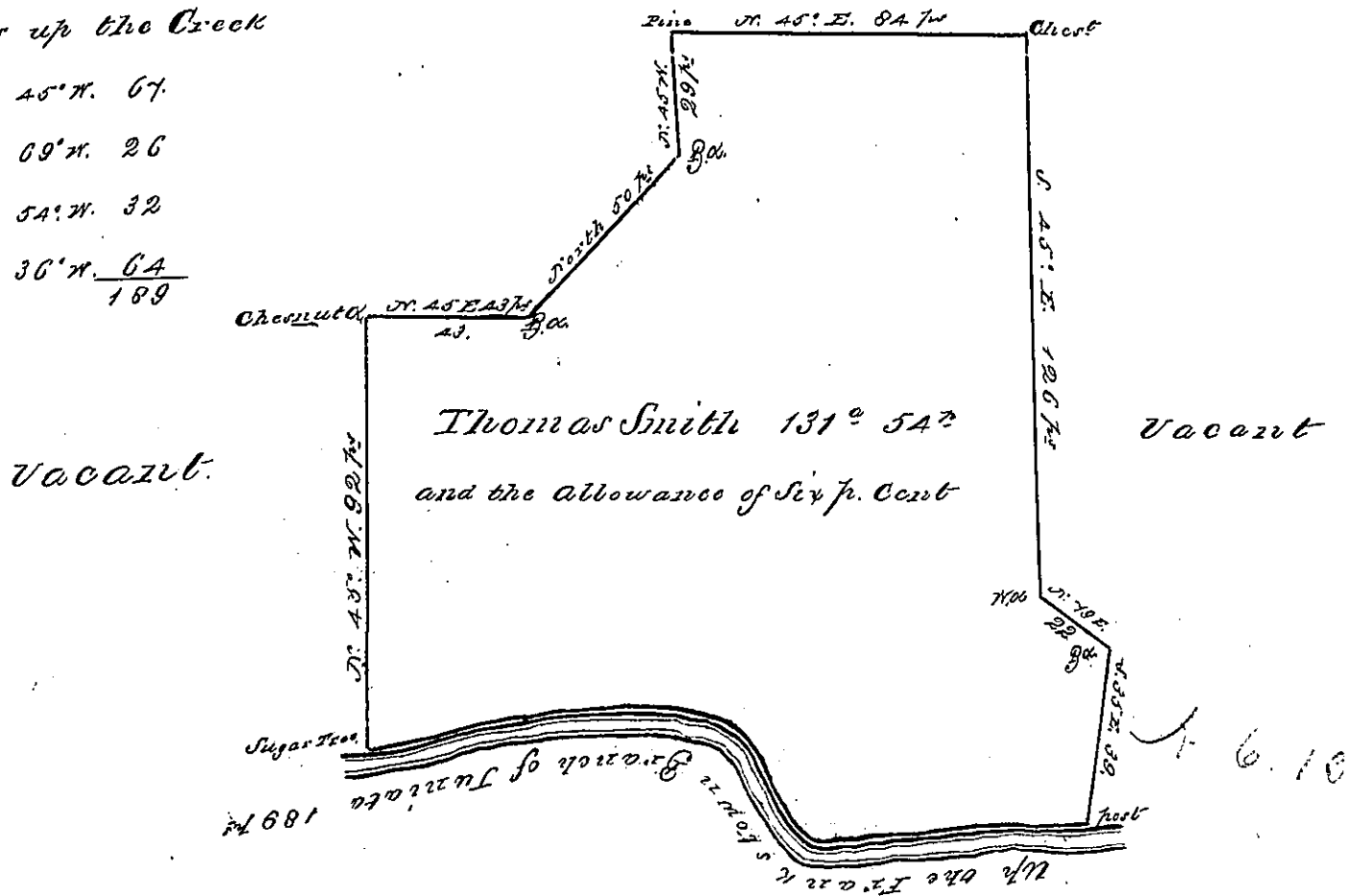


Course up the Creek

S. 45° N. 67
 N 69° N. 26
 N 54° N. 32
 S. 36° N. 64
 189



In pursuance of an order No. 27 dated the 1st day of August 1766. Surveyed the 13th day of September 1766 for Thomas Smith the above described Tract of Land Situate on the Frankletown Branch of Juniata about half a mile below the Canoe place in the County of Cumberland containing one hundred thirty one acres and fifty four perches and the usual allowance of one acre p cent for Roads &c -

Richard Tea depy. Surveyr

To John Lukens Esq^r
 Surveyr &c

IN TESTIMONY that the above is a copy of the original remaining on file in the Department of Internal Affairs of Pennsylvania, made conformably to an Act of Assembly approved the 16th day of February, 1833, I have hereunto set my Hand and caused the Seal of said Department to be affixed at Harrisburg, this

Tweetch day of January 1877

Wm Mandlep
 Secretary of Internal Affairs